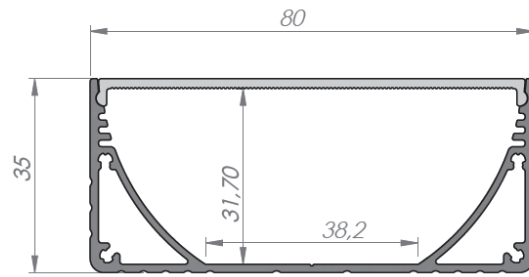


POWER LINE WIDE 80mm

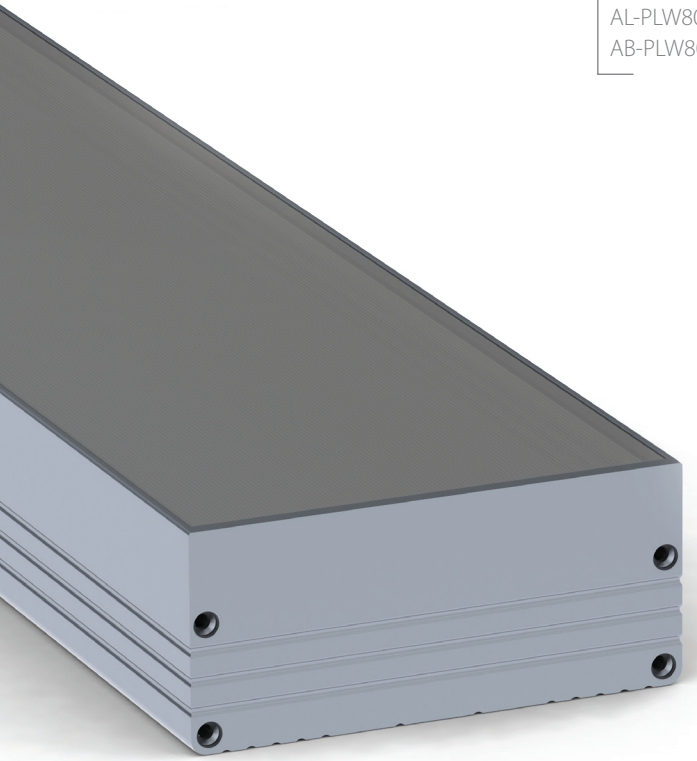
PLW80N; 80 x 35mm

This is new surface installation 80mm width high quality anodized aluminum LED profile with "LEDs DOTS FREE" frosted diffuser.

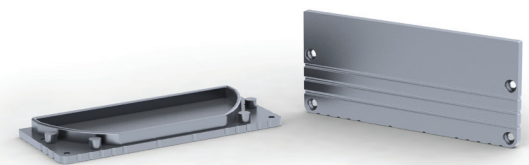
The anodizing surface quality is the same as in other our profiles and it is free of any extrusion marks and production screeches. Anodizing surface is tick enough to resist the transportation and sometimes difficult operating condition. Extended internal LED chamber dimensions for LED stripes gives you free hans of type and size of LED stripe/s what can be accommodate inside the profile. You can use almost any type of led stripe and you decide how much light will came out by using the right LED stripe. The heavy duty heat sink (PLW80N profile) is prepared and capable to provide excellent cooling system for low/high power LED bars [up to 35W/m]. Specially shaped internal chamber reduce the light lost (bouncing of the light inside the profile) and drive the light sleight up to the diffuser surface where the light diffusion is taking place. The profile is coming with choice of two high quality UV stabilized, snap in diffusers in frosted and transparent. PLW80N profile is available with color matching aluminum end caps for professional finish.



AL-PLW80N
AB-PLW80



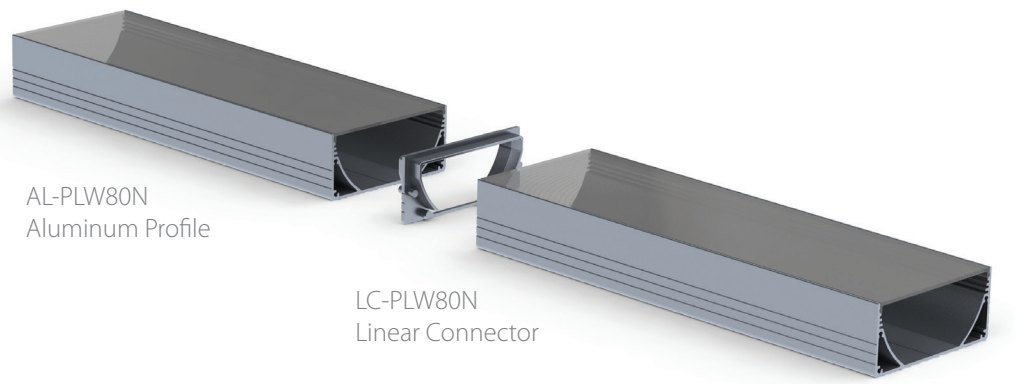
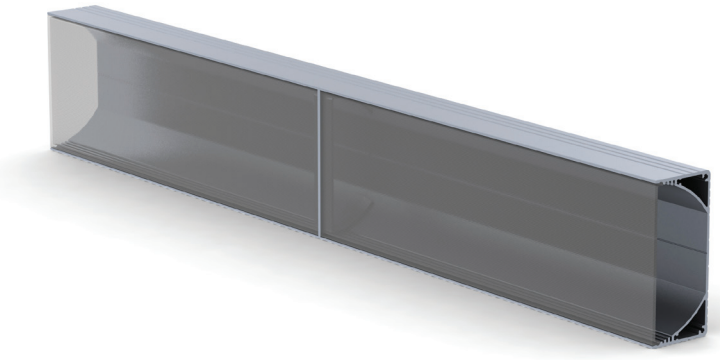
AL-PLW80N
AB-PLW80
EC-PLW80N



EC-PLW80N
Aluminum end caps



LC-PLW80N
Linear Connector



AL-PLW80N
Aluminum Profile

LC-PLW80N
Linear Connector

